



Flight Plan & Site Survey

Created using **RPAS Wilco**®

Operation Name:	Bluewater RC Legion
Pilot Name:	
Pilot Certificate:	
Flight Start:	December 17, 2023 3:05 PM
Flight End:	December 17, 2023 5:05 PM
Flight Area (Latitude):	42° 58' 33.20" N (42.976)
Flight Area (Longitude):	82° 24' 23.80" W (-82.407)
Altitude - Radius:	Alt: 699 ft - Rad: 926.0 m (0.5 nm)
Airspace:	CONTROLLED
FIR - Contact:	CZYZ - 905-676-4509

Please ensure you received all required authorizations prior to flight.

Disclaimer

This Site Survey was created using RPAS Wilco by AIM Robotics. The flight plan contained is intended only for RPAS flights on the date/time and location specified. The user accepts all responsibility for the accuracy and completeness of the information contained.

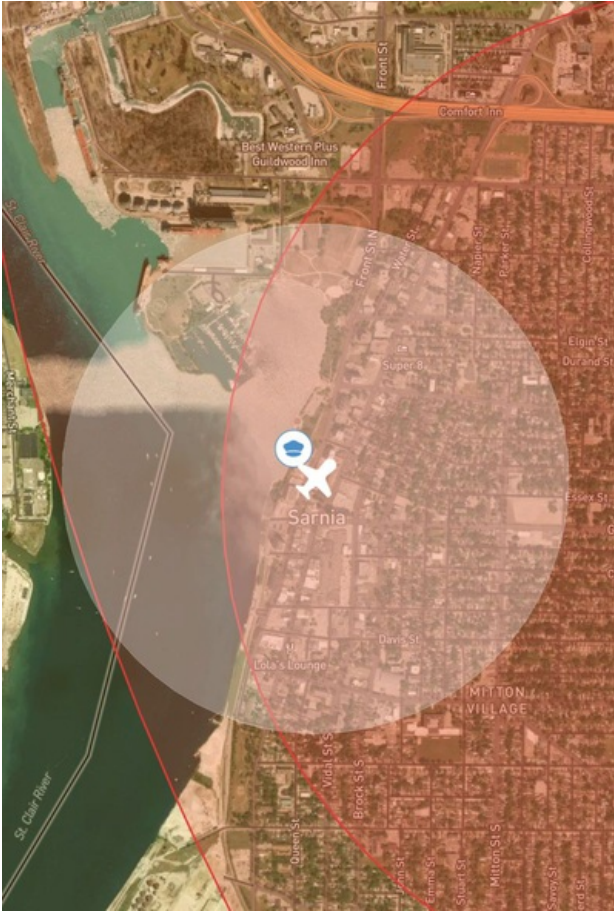
For the complete Terms & Conditions, see

<https://rpswilco.com/#/tnc>



Included

- Site Survey
- Obstacles (if available)
- Nearby Aerodromes
- Canadian Aviation Regulations
- GFA
- Aerodrome Supplements
 - METAR & TAF (if available)
 - NOTAMS
 - CFS

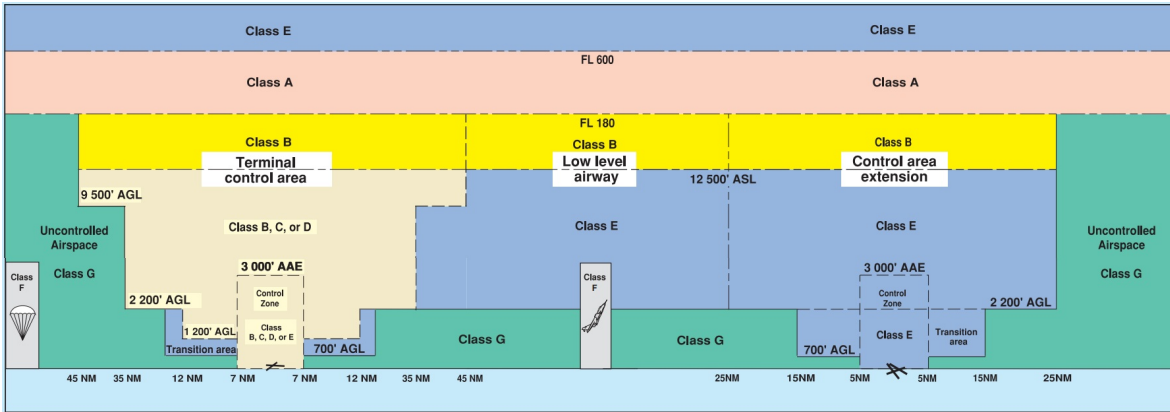
Flight Map



MAP Details

	Latitude	Longitude
 MODEL	42° 58' 33.20" N (42.976)	82° 24' 23.80" W (-82.407)
 Pilot	42° 58' 36.80" N (42.9769)	82° 24' 27.40" W (-82.4076)

Airspace Classification



Overlying Airspaces

Class	Name	Floor	Ceiling
E	Southern Ontario Low Level Control Area CAE	2500MSL	6500MSL
E	Sarnia , ON TA	700AGL	12500MSL
B	Sarnia , ON TA	12500MSL	18000MSL
E	T781 Airway	2200AGL	12500MSL
B	T781 Airway	12500MSL	18000MSL
E	Sarnia CZ	SFC	3000AGL
B	T781 Airway	12500MSL	18000MSL
E	T781 Airway	2200AGL	12500MSL
E	Southern Ontario Low Level Control Area CAE	6500MSL	12500MSL
B	Southern Ontario Low Level Control Area CAE	12500MSL	18000MSL

Nearest Aerodromes & Distance from Operation

SARNIA (BLUEWATER HEALTH) (CBW5 - HELIPOINT - Cert)	Lat: 42.975	Long: -82.388	1.517 KM	0.82 NM
SARNIA (CHRIS HADFIELD) (CYZR - AERODROME - Cert)	Lat: 42.999	Long: -82.309	8.345 KM	4.51 NM
BUTLER AIRFIELD (CBA7 - AERODROME - Reg)	Lat: 42.916	Long: -82.206	17.634 KM	9.52 NM

Canadian Aviation Regulations

Division III — General Operating and Flight Rules

For full listing please visit : <https://laws-lois.justice.gc.ca/eng/regulations/SOR-96-433/FullText.html#s-901.27>

Visual Line-of-sight

- **901.11 (1)** Subject to subsection (2), no pilot shall operate a remotely piloted aircraft system unless the pilot or a visual observer has the aircraft in visual line-of-sight at all times during flight.
- **(2)** A pilot may operate a remotely piloted aircraft system without the pilot or a visual observer having the aircraft in visual line-of-sight if the operation is conducted in accordance with a special flight operations certificate — RPAS issued under section 903.03.

Procedures

- **901.23 (1)** No pilot shall operate a remotely piloted aircraft system unless the following procedures are established:
 - **(a)** normal operating procedures, including pre-flight, take-off, launch, approach, landing and recovery procedures; and
 - **(b)** emergency procedures, including with respect to
 - **(i)** a control station failure,
 - **(ii)** an equipment failure,
 - **(iii)** a failure of the remotely piloted aircraft,
 - **(iv)** a loss of the command and control link,
 - **(v)** a fly-away, and
 - **(vi)** flight termination.
- **(2)** If the manufacturer of the remotely piloted aircraft system provides instructions with respect to the topics referred to in paragraphs (1)(a) and (b), the procedures established under subsection (1) shall reflect those instructions.
- **(3)** No pilot shall conduct the take-off or launch of a remotely piloted aircraft unless the procedures referred to in subsection (1) are reviewed before the flight by, and are immediately available to, each crew member.
- **(4)** No pilot shall operate a remotely piloted aircraft system unless the operation is conducted in accordance with the procedures referred to in subsection (1).

Site Survey

901.27 No pilot shall operate a remotely piloted aircraft system unless, before commencing operations, they determine that the site for take-off, launch, landing or recovery is suitable for the proposed operation by conducting a site survey that takes into account the following factors:

- **(a)** the boundaries of the area of operation;
- **(b)** the type of airspace and the applicable regulatory requirements;
- **(c)** the altitudes and routes to be used on the approach to and departure from the area of operation;
- **(d)** the proximity of manned aircraft operations;
- **(e)** the proximity of aerodromes, airports and heliports;
- **(f)** the location and height of obstacles, including wires, masts, buildings, cell phone towers and wind turbines;
- **(g)** the predominant weather and environmental conditions for the area of operation; and
- **(h)** the horizontal distances from persons not involved in the operation.

Operations at or in the Vicinity of an Aerodrome, Airport or Heliport

- **901.47 (1)** No pilot shall operate a remotely piloted aircraft at or near an aerodrome that is listed in the *Canada Flight Supplement* or the *Water Aerodrome Supplement* in a manner that could interfere with an aircraft operating in the established traffic pattern.
- **(2)** Subject to section 901.73, no pilot shall operate a remotely piloted aircraft at a distance of less than
 - **(a)** three nautical miles from the centre of an airport; and
 - **(b)** one nautical mile from the centre of a heliport.
- **(3)** No pilot shall operate a remotely piloted aircraft at a distance of less than three nautical miles from the centre of an aerodrome operated under the authority of the Minister of National Defence unless the operation is conducted in accordance with a special flight operations certificate — RPAS issued under section 903.03.

Records

- **901.48 (1)** Every owner of a remotely piloted aircraft system shall keep the following records:
 - **(a)** a record containing the names of the pilots and other crew members who are involved in each flight and, in respect of the system, the time of each flight or series of flights; and
 - **(b)** a record containing the particulars of any mandatory action and any other maintenance action, modification or repair performed on the system, including
 - **(i)** the names of the persons who performed them,
 - **(ii)** the dates they were undertaken,
 - **(iii)** in the case of a modification, the manufacturer, model and a description of the part or equipment installed to modify the system, and
 - **(iv)** if applicable, any instructions provided to complete the work.
- **(2)** Every owner of a remotely piloted aircraft system shall ensure that the records referred to in subsection (1) are made available to the Minister on request and are retained for a period of
 - **(a)** in the case of the records referred to in paragraph (1)(a), 12 months after the day on which they are created; and
 - **(b)** in the case of the records referred to in paragraph (1)(b), 24 months after the day on which they are created.
- **(3)** Every owner of a remotely piloted aircraft system who transfers ownership of the system to another person shall, at the time of transfer, also deliver to that person all of the records referred to in paragraph (1)(b).

ONTARIO

AERODROME/FACILITY DIRECTORY

SARNIA (BLUEWATER HEALTH) ON (Heli)**CBW5**

REF	N42 58 31 W82 23 17 Adj 8°W (2022) UTC-5(4) Elev 598' A5000	
OPR	Bluewater Health 519-464-4500 Ext 4040 Cert PPR	
PF	B-1,2,4 C-3,5,6	
FLT PLN	Pilots to open/close VFR flt plan with London rdo, FISE or by phone.	
FIC	London 866-WXBRIEF (Toll free within Canada) or 866-541-4104 (Toll free within Canada & USA)	
HELI DATA	FATO 82' dia ASPH/CONC TLOF 33' dia CONC Safety Area 109' dia Max heli overall length 57.4' (CAR 602.96)	
RCR	Opr	
LIGHTING	DR RF(FL) RW(LO) Green	
COMM	tfc 123.0 5NM centred on Sarnia A/D 3.7NM ENE 3600 ASL	
PRO	Arr/dep 094° to 110° & 306° fr heli (H1), day use only (CAR 602.96). School playground immediately W of Heli; hovering and/or maneuvering adj or over Heli fencing next to school yard proh.	
CAUTION	Marked P-lines lctd aprx 320' NW and 400' E fr heli. Trees 650' E fr heli 85' AGL. Lgtd hosp bldg NW fr heli. Lgtd lamp posts N fr heli. Lgtd antenna twr 600' SE fr heli 155' AGL.	

ONTARIO

AERODROME/FACILITY DIRECTORY

SARNIA (CHRIS HADFIELD) ON

CYZR

REF	N42 59 59 W82 18 34 4ENE 8°W UTC-5(4) Elev 595' A5000 LO6 HI5 CAP	
OPR	City 519-542-7767 13-22Z† Mon-Fri, 13-20Z† Sat-Sun & hols Cert	
PF	B-1,2,6 C-3,4,5	
CUST	AOE/30 888-226-7277 13-04Z† PN	
FLT PLN		
FIC	London 866-WXBRIEF (Toll free within Canada) or 866-541-4104 (Toll free within Canada & USA)	
WX	METAR AUTO H24 (see COMM) TAF 10-03Z†, issue times: 0840, 1340, 1940Z (DT 0740, 1340, 1940Z). WxCam	
SERVICES	Corporate & Commercial after hrs call out 519-381-3444. Chgs may apply.	
FUEL	100LL 13-01Z†, JA-1 HPR 13-23Z†	
OIL	65, 80, 100 13-01Z†	
S	1,4,5,6 Ltd stor	
PVT ADV	Piston FBO 519-542-6599, after hrs call out 519-402-2199. Chgs may apply. Jet/Turbine FBO 519-542-7767 PN.	
RWY DATA	Rwy 15(145°)/33(325°) 5106x100 ASPH Rwy 06(055°)/24(235°) 2990x75 ASPH	
RWY CERT	Rwy 15/33 AGN IIIA Rwy 06/24 AGN I	
TWY CERT	Twy C AGN I	
TWY	Twy C rstd day use only. Twy A rstd pvt use only.	
RCR	Opr 13-22Z† Mon-Fri, 13-20Z† Sat-Sun and hols, O/T 2hr PN call out chg.	
LIGHTING	15-AS(TE HI) P1, 33-AN(TE HI) P1 ARCAL-123.0 type K	
COMM		
RCO	London rdo 123.475 (FISE)	
ATF	tfc 123.0 5NM 3600 ASL	
PAL	Toronto Ctr 134.375	
AWOS	119.125	
PRO	Rgt hand circuits Rwy 24 (CAR 602.96).	
CAUTION	5' bdry fence aprx 380' SW Thld 15. Snowy Owl presence Nov 1 - Mar 31.	

ONTARIO

AERODROME/FACILITY DIRECTORY

PETROLIA / BUTLER AIRFIELD ON

CBA7

REF	N42 54 59 W82 12 23 3.4SE 8°W (2022) UTC-5(4) Elev 650' A5000
OPR	Edward & Tyler Butler 519-882-3125 Reg PPR
FLT PLN FIC	London 866-WXBRIEF (Toll free within Canada) or 866-541-4104 (Toll free within Canada & USA)
RWY DATA RCR	Rwy 01/19 2700x50 GRASS Opr Apr 15-Nov 15 No win maint.
COMM ATF	tfc 123.0 5NM 3700 ASL

